

—  
BLOQ

creative  
carpet tiles



THE WORKPLACE  
CONNEXION

—  
BLOQ

creative  
carpet tiles



© Rijksmuseum, Genemuiden

## Our story

Being part of Betap, BLOQ can build on more than **100 years of experience** in the flooring sector. Betap grew from a local manufacturer of rush mats in 1918 to an internationally renowned carpet manufacturer.

Working with some of the most reputable architects, designers and commercial carpet partners, Betap's **high-traffic commercial carpet** is used across the world in prestigious office buildings, hotels, universities, museums and various leisure applications. Betap is your partner of choice for commercial carpet.



© Het Rijksmuseum, Frans Hals

### *Nice to know*

The colour ochre in the BLOQ logo refers to the rushes and the colour palette of the Golden Age in Holland.



## High-end production line

Group Betap is an **innovative carpet manufacturer** in Genemuiden (The Netherlands) with a vertically integrated production line for tufted and non-woven floor coverings, as well as an own yarn production line.

With BLOQ, we are developing and producing **creative carpet tiles** that comply with the stringent regulations for the commercial market. We offer high-performance tiles focused on office projects, that are sound absorbing and have the best results in fire safety. Our products are also produced following the strictest standards in sustainability.



# The Workplace

CONNEXION is part of The Workplace collection. With this **mainstream collection** group you mark your own, personal workspace. Feel free to **play and combine with three collections**: TRADITION, CONNEXION and RHYTHM.

The Workplace collections also match perfectly with our The Binary collection, which uses the same colours.



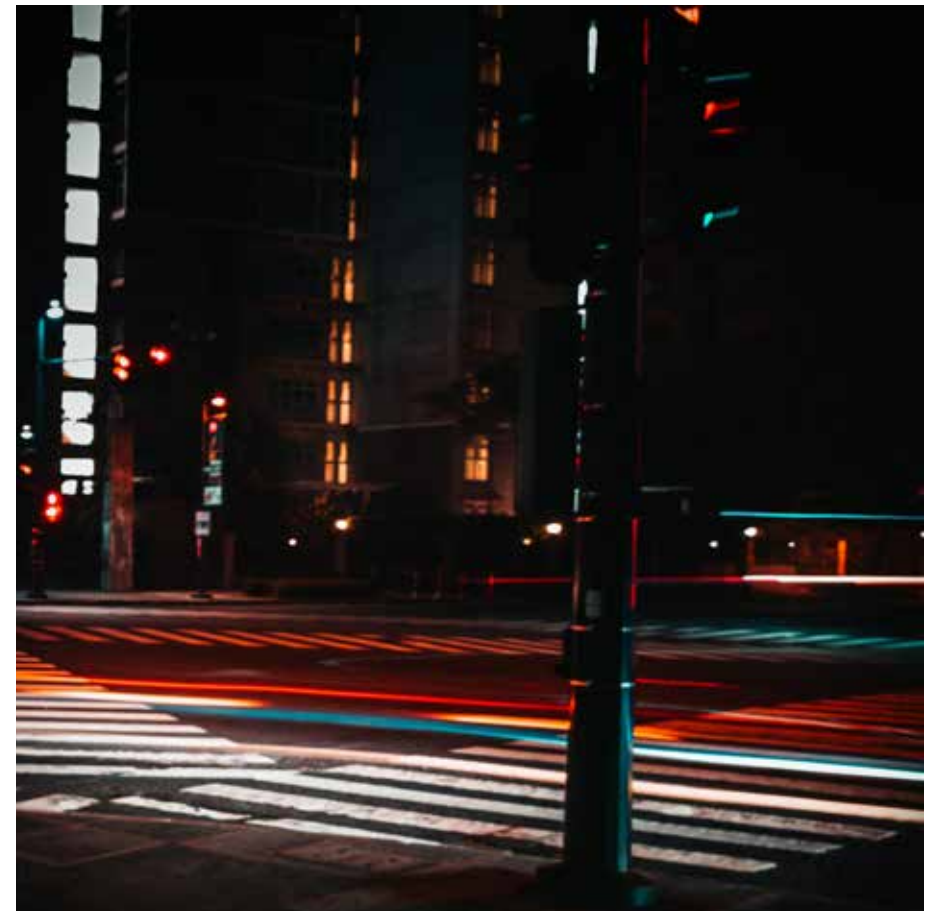
CONNEXION

TRADITION

RHYTHM

*A mixed striped pattern made to connect*

THE WORKPLACE  
CONNEXION



Inspiration  
is everywhere

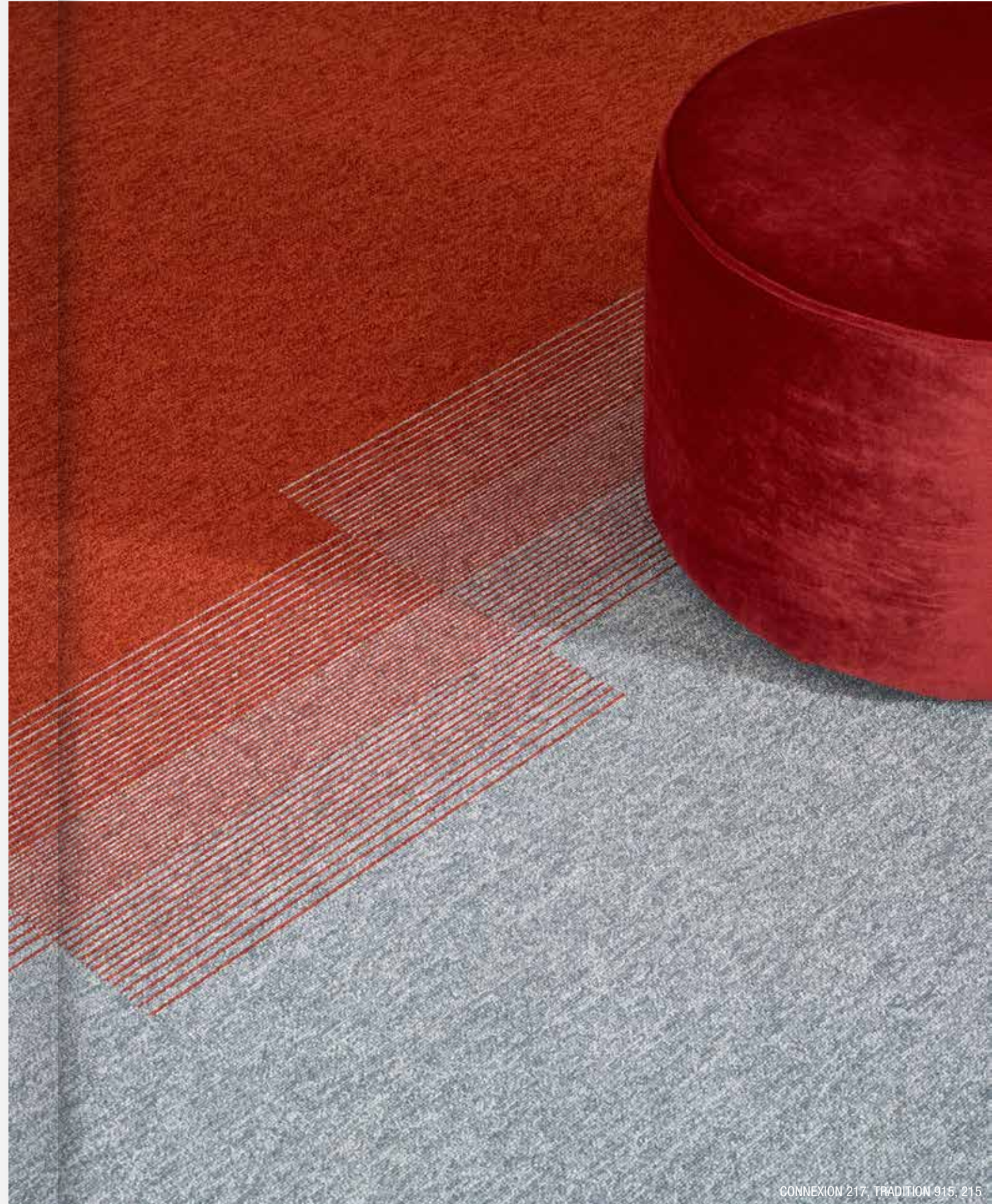
Mixed pattern



## Connecting zones

CONNEXION is a tile of 50 x 50 cm. It has a **mixed striped pattern** designed to connect. The pattern makes a connection in your room between a grey zone and a more pronounced coloured zone, made with TRADITION tiles.

Time to play!



CONNEXION 217, TRADITION 915, 215



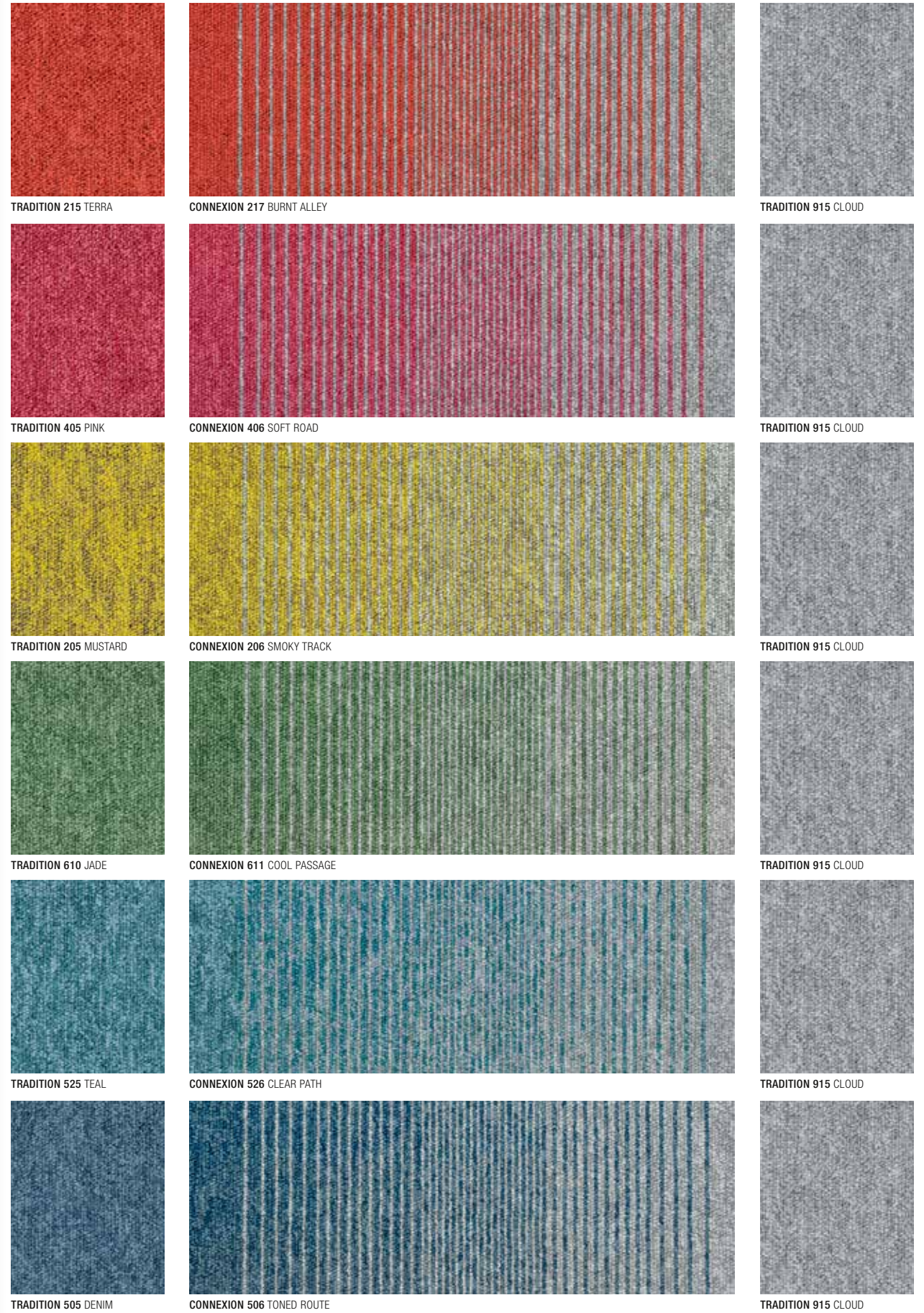
CONNEXION 406

# Colour range

CONNEXION comes in **eight connecting colours**: two tone-on-tone colours and six bright colours.

You can use the colours pure as they are, or combined. Discover the fun to play with the matching TRADITION tones and 'connect' with the CONNEXION tiles.

*Matching  
Tradition tones*



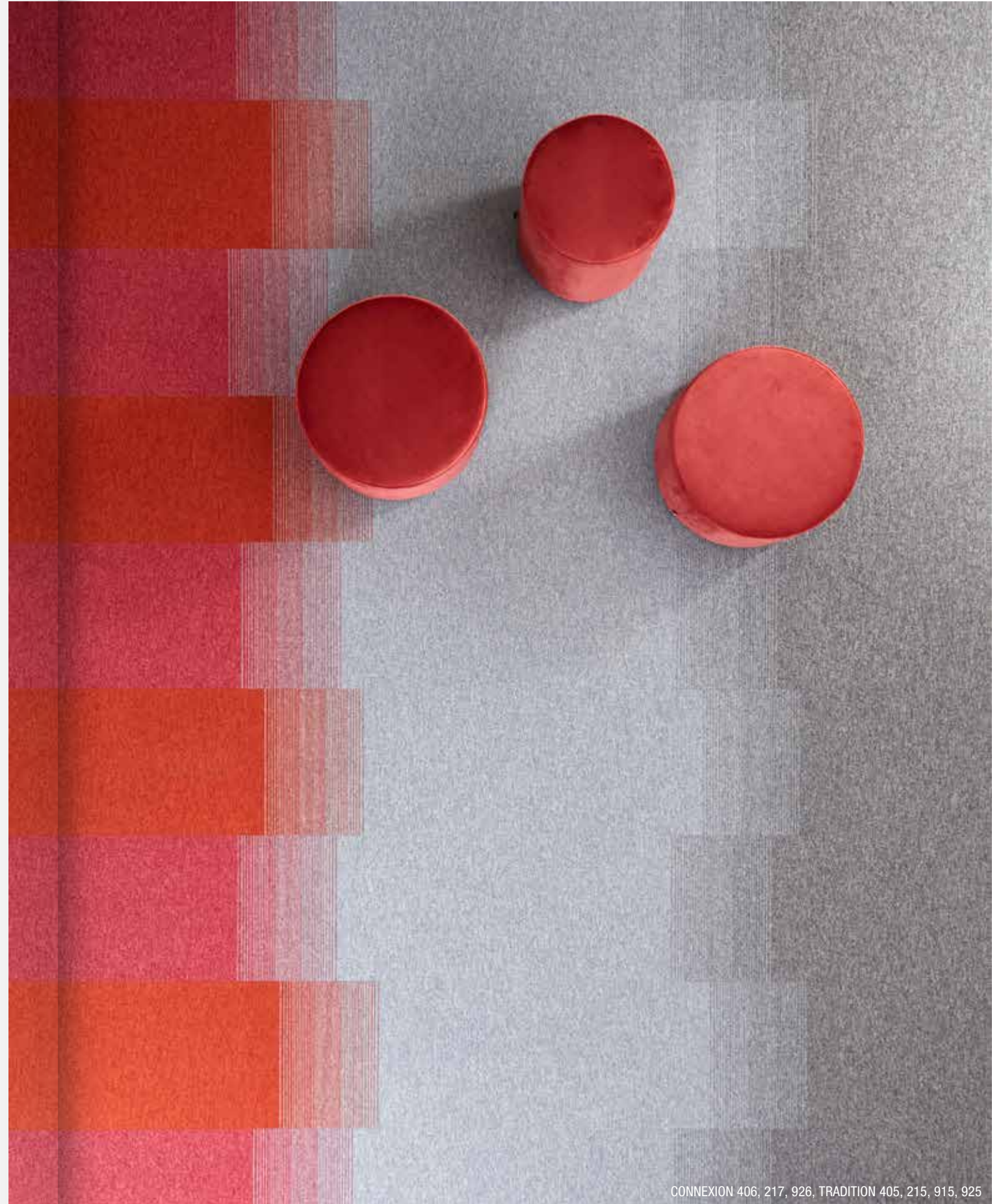




CONNEXION 926, TRADITION 915, 925

## Pure or mixed

Use the colours pure in **one colour tone or dare to mix** with other tones. Soft hues stimulate a homely feeling at work, current colours meet today's trends.



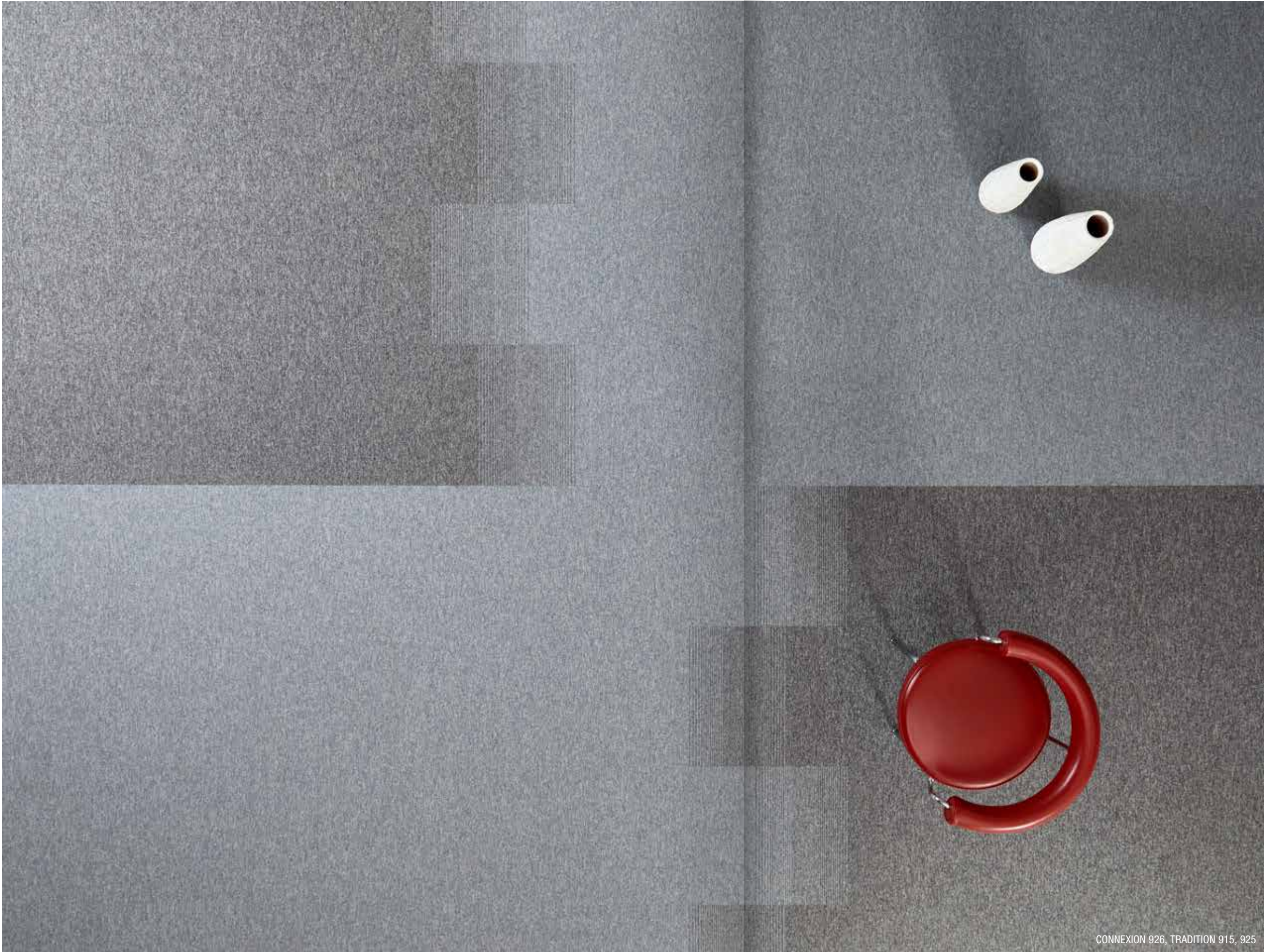
CONNEXION 406, 217, 926, TRADITION 405, 215, 915, 925



CONNEXION 206, TRADITION 205, 915



CONNEXION 206, TRADITION 205, 915



CONNEXION 926, TRADITION 915, 925

# Highlights

## BITBACK

BLOQ uses **Bitback**, Modified Bitumen, which consists of 70% recycled content.

Tiles made with Bitback deliver great acoustic results such as **high sound absorption and insulation**, as well as **noise reduction**. Therefore carpets made with this sustainable backing contribute substantially to personal health and comfort.



**AQUAFIL**  
synthetic fibres and polymers

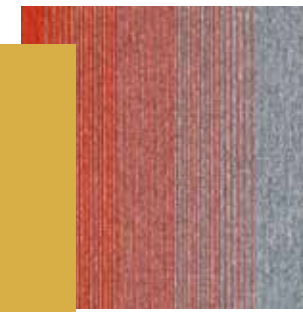
## SOLUTION DYED YARNS

BLOQ uses 100% Polyamide 6 Solution Dyed Nylon from **Aquafil**, the best and leading supplier for carpet manufacturers. Solution dyed means **better colour fastness** and the best results to light and water.

## LIGHT REFLECTANCE VALUES

**Light Reflectance Value (LRV)** is a scale that measures visible and usable light reflected from an illuminated surface. The percentage identifies how much light a colour reflects or absorbs. 0% reflects no visible light, 100% reflects all light.

COLOUR	LRV av	L
122	15.91	46.85
206	17.70	49.13
217	13.05	42.84
406	13.66	43.73
506	12.61	42.18
526	14.32	44.68
611	14.16	44.47
926	15.35	46.11



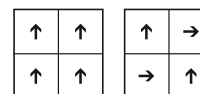
# THE WORKPLACE CONNEXION

## SPECIFICATIONS

<b>TYPE OF MANUFACTURE</b>	Tufted Loop Pile 1/10"
ISO 2424	
<b>PILE FIBER COMPOSITION</b>	100% Polyamide 6
ISO 2424	Solution Dyed Nylon made by Aquafil
<b>SECONDARY BACKING</b>	Bitback, Modified Bitumen
ISO 2424	70% Recycled Content
<b>DIMENSION</b>	50 x 50 cm
EN ISO 24342	
<b>PILE WEIGHT</b>	540 g/m <sup>2</sup>
ISO 8543	
<b>SURFACE PILE WEIGHT</b>	330 g/m <sup>2</sup>
ISO 8543	
<b>TOTAL WEIGHT</b>	4 250 g/m <sup>2</sup>
ISO 8543	
<b>TOTAL THICKNESS</b>	6.0 mm
ISO 1765	
<b>PILE HEIGHT</b>	2.7 mm
ISO 1766	
<b>PILE DENSITY</b>	0.123 g/m <sup>3</sup>
ISO 8543	
<b>NUMBER OF TUFTS</b>	156 000 /m <sup>2</sup>
ISO 1763	
<b>DIMENSIONAL STABILITY</b>	≤ 0.2%
ISO 2551	
<b>NUMBER OF COLOURS</b>	8
<b>PACKAGING</b>	Box: 20 tiles / 5 m <sup>2</sup> Pallet: 200 m <sup>2</sup>

## PERFORMANCE

<b>CLASSIFICATION</b>	33
EN 1307	
<b>LUXURY RATING</b>	LC1
EN 1307	
<b>CASTOR CHAIR RATING</b>	A: Intensive use
EN 985	
<b>FIRE CLASSIFICATION</b>	B <sub>fl</sub> -s1
EN 13501-1	
<b>IMPACT SOUND INSULATION</b>	ΔL <sub>w</sub> : 25 dB
EN ISO 10140-3	
<b>SOUND ABSORPTION</b>	Frequency Hz 125 250 500 1000 2000 4000
EN ISO 354	α <sub>s</sub> 0.00 0.03 0.06 0.16 0.30 0.35
<b>NOISE REDUCTION</b>	α <sub>w</sub> : 0.15
EN ISO 354	
<b>PERMANENT ANTISTATIC</b>	≤ 2 kV
ISO 6356	
<b>TRANSVERSAL RESISTANCE</b>	≤ 1 X 10 <sup>9</sup> Ohm
ISO 10965	
<b>THERMAL RESISTANCE</b>	0.064 m <sup>2</sup> K/W
ISO 8302	
<b>COLOUR FASTNESS TO LIGHT</b>	≥ 7
EN ISO 105-B02	
<b>COLOUR FASTNESS TO WATER</b>	≥ 4
EN ISO 105-E01	
<b>RUBBING FASTNESS</b>	≥ 4
EN ISO 105-X12	
<b>GUT N° PRODIS</b>	0D32FA3E



All rights reserved to alter technical specifications.



Part of **betap**<sup>®</sup>

[www.bloq.nl](http://www.bloq.nl)